

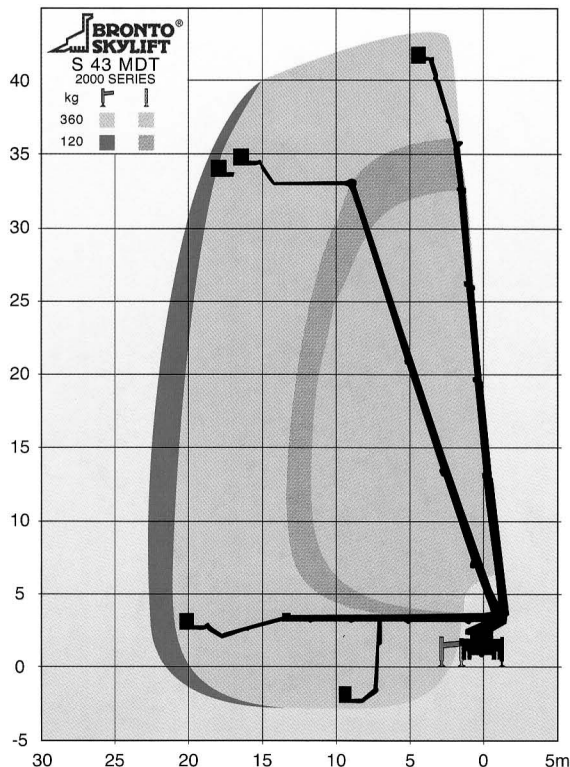
## TECHNICAL SPECIFICATION

Working height	43.0 m
Height to working cage floor	41.0 m
Working outreach	21.3 - 23.0 m
Outreach to cage corner	20.6 - 22.3 m
Safe working load	360 - 120 kg
Rotation	±280°
Transport height (depending on chassis)	3.6 m
Transport length (depending on chassis)	9.4 m
Transport width	2.5 m
Outrigger width (C/C), front	5.4 m
rear	5.4 m
Total weight, (without chassis)	10.2 ton
Working cage	0.9 x 2.2 x 1.1 m
GVW	18 ton

# S 43 MDT<sup>2000</sup>

## STANDARD FEATURES

- Electro-hydraulic control system
- Bronto<sup>+</sup>
- Joystick control levers for boom movements in the cage, push button controls at the turntable
- Electro-hydraulic cage levelling system
- Doubled safety system
- Slow speed movement before meeting outreach limit
- Safety switches for extension chains
- Engine start prevention gear connected
- Automatical interlock system to prevent the lifting of the booms when the outriggers are in transport position
- Signal lights for outriggers and boom transport position in driver's cab
- Back-up system for hydraulics by battery pump
- Push button in the cage for sound signal
- Turntable rotation approx ±280° electrically limited
- Changeable working cage
- Cloth covered turntable
- Aluminium decking with hot dip galvanized frame
- Ladder type step with railing (one side)
- Outrigger ground pads with brackets
- One locker at the rear of the vehicle with hinged door for outrigger control panel
- Flashlights to outriggers
- Side lights (yellow)
- Wheel chocks with brackets
- Plastic mudguards for rear axle
- Mounting on chassis



Alterations reserved.

**Bronto Skylift Oy Ab**  
Teerivuorenkatu 28  
FIN-33300 Tampere  
Finland  
Tel. +358-3-2727 111  
Fax +358-3-2727 300  
E-mail: sales@bronto.fi  
www.bronto.fi

**Bronto Skylift AG**  
Ifangstrasse 111  
CH-8153 RÜMLANG  
Schweiz  
Tel. +41-1-818 8040  
Fax +41-1-818 8050

**Bronto Skylift AB**  
Effektvägen 14  
S-196 37 KUNGSÄNGEN  
Sweden  
Tel. +46-8-5816 6040  
Fax +46-8-5816 6035