

---

TECHNICAL DATA SHEET

**MRT 2150 2550 PRIVILEGE +**  
**Manitou Telescopic**



 **MANITOU**  
HANDLING YOUR WORLD

# MRT 2150 2550 PRIVILEGE+



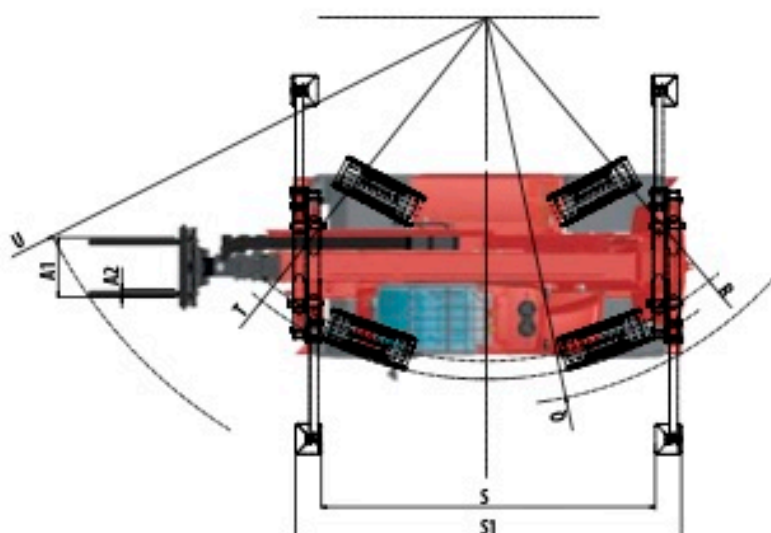
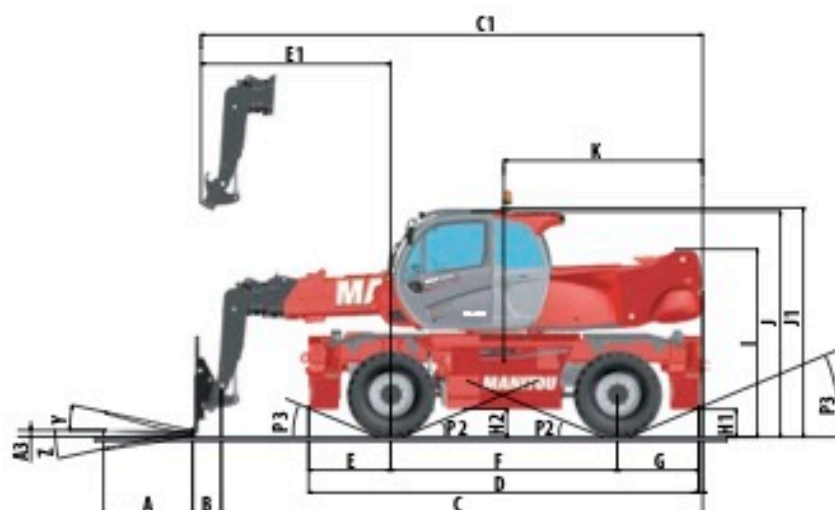
	MRT 2150 Privilege +	MRT 2550 Privilege +
<b>Lifting</b>		
Max. capacity with forks at 500 mm LC	4999 kg	
Max. lifting height	20.90 m	24.70 m
Max. outreach	17.90 m	21.40 m
<b>Tires</b>		
	445 / 65 R22.5	
<b>Stabilizers</b>		
	duplex telescopic simultaneously and individually controlled	
<b>Full continuous rotation</b>		
	turret mounted on a double slew ring with internal gearing / slewing system with negative brake	
<b>Frame levelling / oscillating axle</b>		
	on front axes +/- 8° oscillating rear axle with automatic hydraulic lock out on rotation (> +/- 7.5°) and boom height (> 55°)	
<b>Braking</b>		
Service brake	oil bath multiple disc brakes hydraulically assisted on both axes	
Parking brake	automatic negative parking brake	
<b>Engine</b>		
	MERCEDES - STAGE 4 - FINAL TIER 4	
Type	OM 934 E4-5	
Displacement	4 cylinders - 5.13 liters	
Power	156 HP/115 kW	
Max torque	675 Nm - from 1200 to 1500 rpm	
Gradeability	40%	
Batteries	24 V: 2x 12V - 120 Ah - 850 A	
<b>Transmission</b>		
	hydrostatic	
Drive wheels	4 wheel drive	
Steering mode	4 wheel steer - 3 steering modes	
Max. travel speed <small>(maximum according to applicable regulations)</small>	40 kph	
<b>Controls</b>		
	2 multi-function joysticks	
<b>Hydraulics</b>		
Hydraulic pump	115 l/min – 275 bar gear type	
<b>Capacities</b>		
Hydraulic oil	225 l	
Fuel	305 l	
Urea (AdBlue type *)	57 l	
<b>Unladen weight (with forks)</b>		
	17930 kg	18900 kg
<b>Dimensions</b>		
Overall width	2.49 m	
Overall width (stabilizer extended)	5.55 m	
Overall height	3.05 m	
Overall length to carriage	6.87 m	7.84 m
Turning radius (minimum)	4.88 m	
Ground clearance	0.35 m	
Standard forks (length x width x thickness)	1200 x 150 x 50 mm	
<b>Safety</b>		
	load state monitoring system (crane norm) attachement recognition system (E-Recog) cab compliant with ROPS / FOPS level III standard	
<b>Noise and vibration</b>		
Noise at driving position (LpA)	79.7 dB	
Environmental noise (LwA)	108 dB	
Vibration to whole hand/arm	<2.50 m/s <sup>2</sup>	

This brochure describes various and configuration options for Manitou products which may be fitted with different equipment. The equipment described in this brochure may be standard, optional or not available depending on version. Manitou reserves the right to change the specifications shown and described at any time and without prior warning. The manufacturer is not liable for the specifications given. For more information, contact your Manitou dealer. Non-contractual document. Product descriptions may differ from actual products. List of specifications is not comprehensive. The logo and visual identity of the company are the property of Manitou and may not be used without authorization. All rights reserved. The photos and diagrams contained in this brochure are provided for information only.

MANITOU SF SA - limited company with board of directors - Share capital: 20,547,824 euros - 857 802 588 RCS Nantes



# MRT 2150 2550 PRIVILEGE+



mm	MRT 2150/2550	
A	1200	
A1	150	
B	385	
C	6485	7490
C1	6760	7745
D	5350	
E	1150	
E1	2960	3045
F	3050	
G	1150	
H1	350	
H2	350	
I	2630	
J	3000	
J1	3050	
K	2675	3175

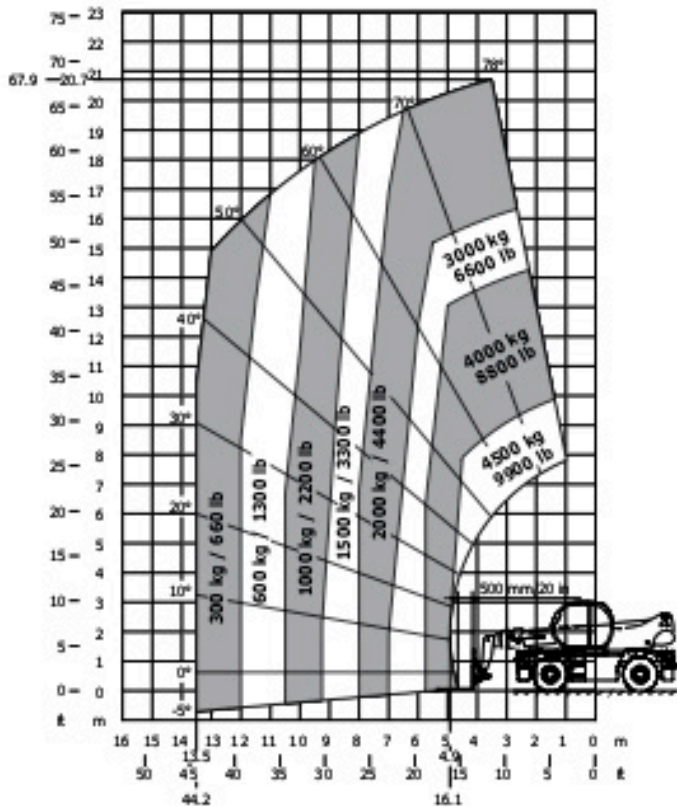
mm	MRT 2150 /2550	
L	2050	
M	2490	
N	5140	
O	5555	
P	230	
P2	15°	
P3	22°	
Q	5235	
R	4650	
S	4500	
S1	5190	
T	4880	
U	6550	6915
V	950	
Y	12°	
Z	105°	



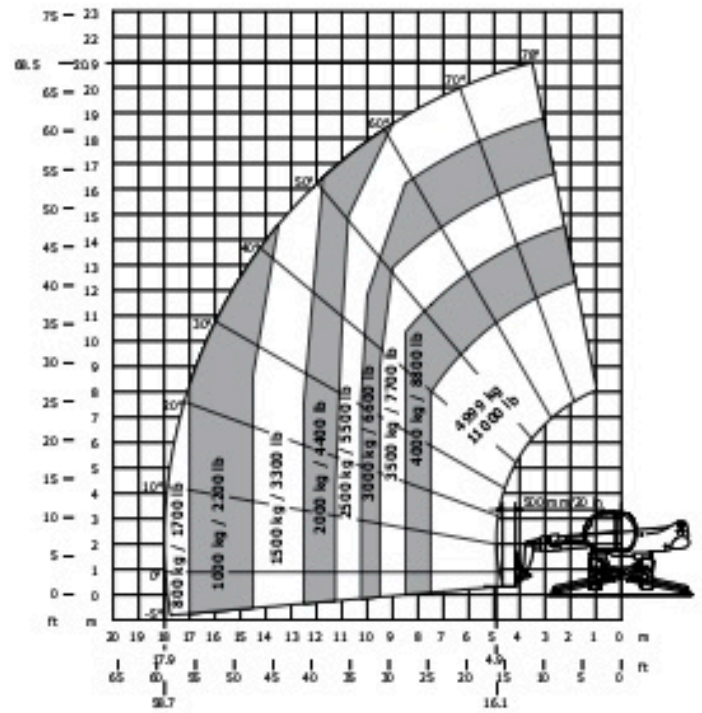
# MRT 2150 PRIVILEGE +



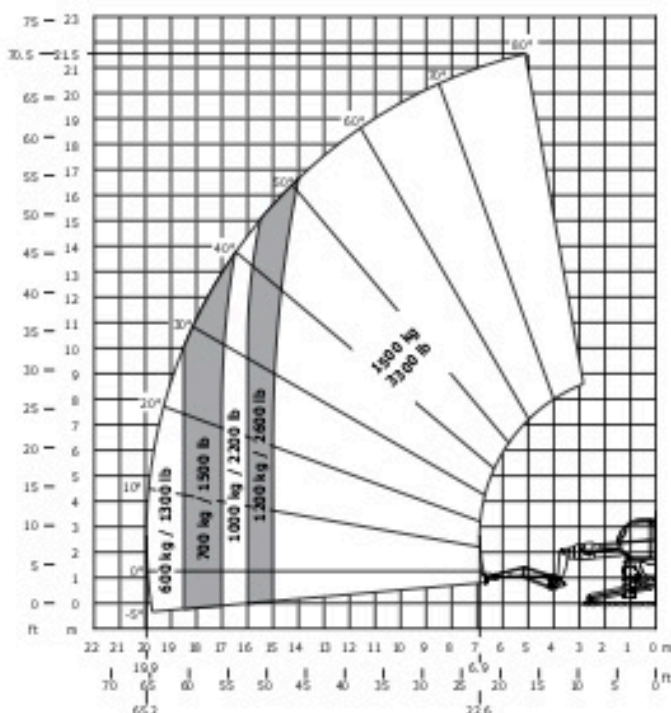
Frontal on wheels  
with forks



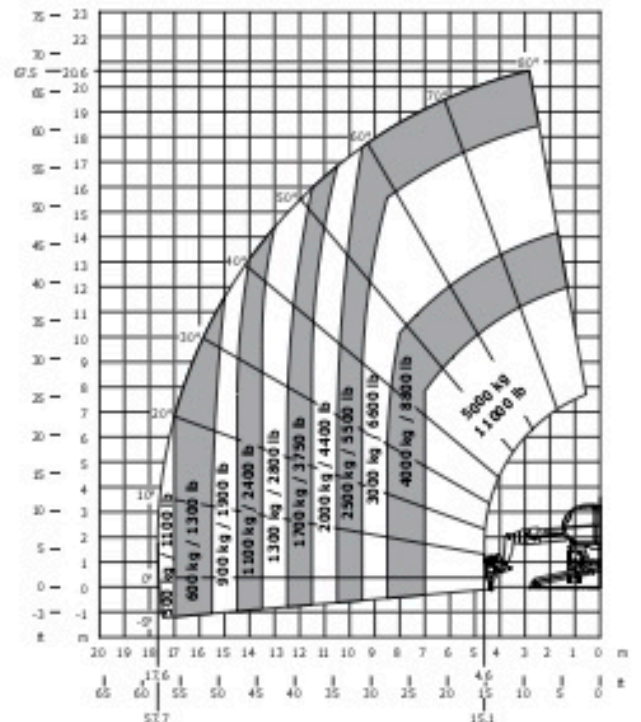
Rotation on extended stabilizers  
with forks



Rotation on extended stabilizers  
with 1500 jib

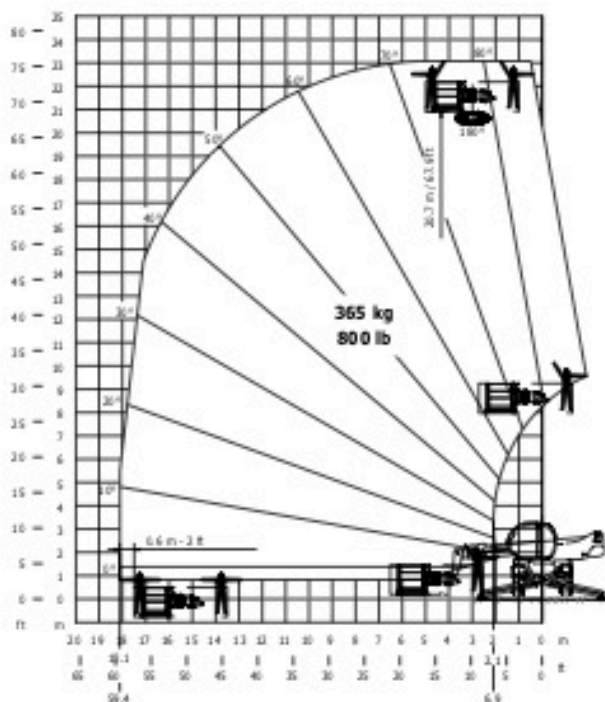


Rotation on extended stabilizers  
with 5000 kg winch

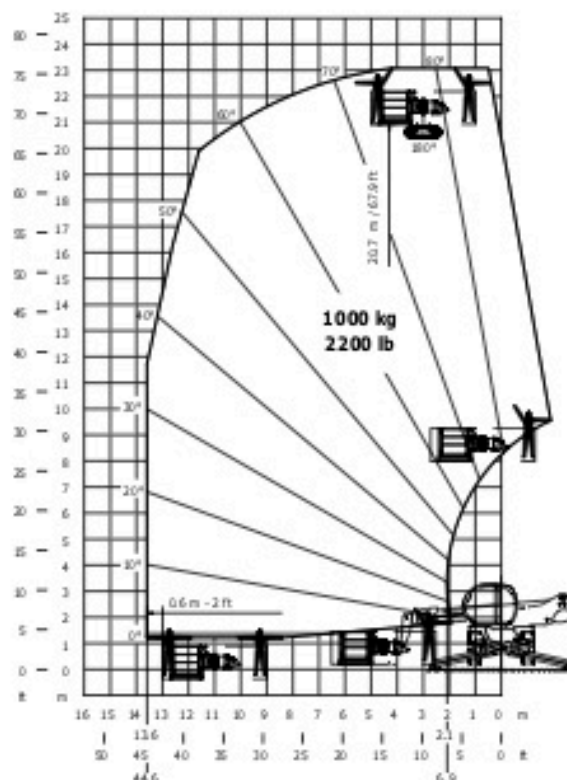




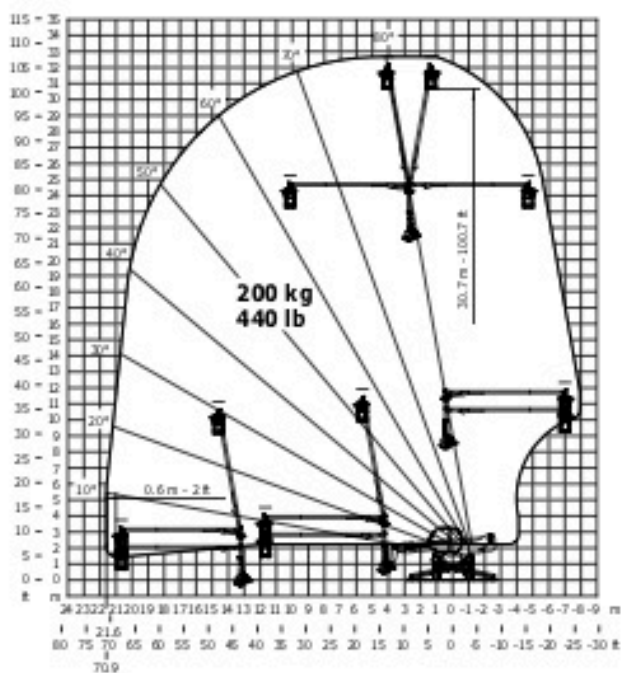
Rotation on extended stabilizers  
with 365 kg platform



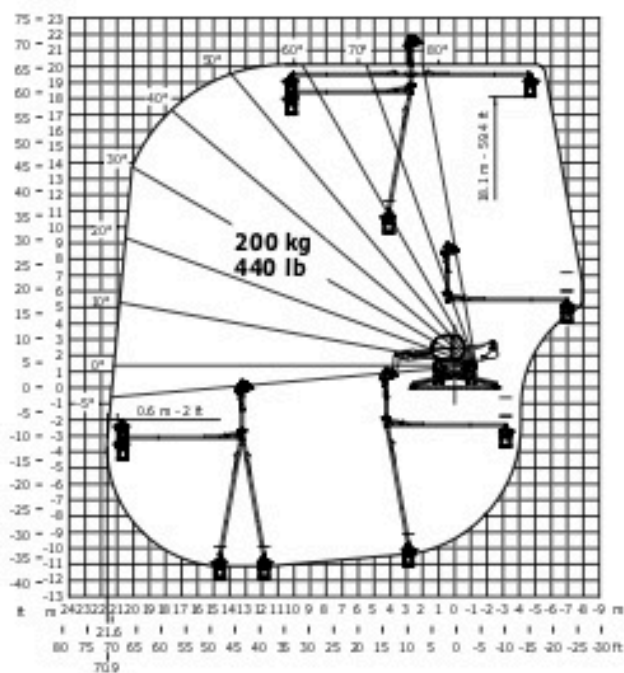
Rotation on extended stabilizers  
with 1000 kg platform



Rotation on extended stabilizers  
3D positive

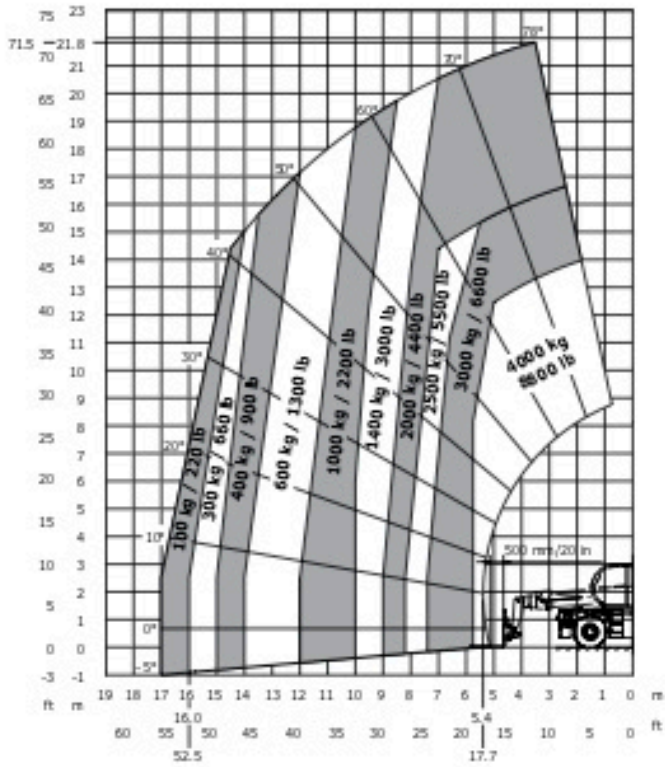


Rotation on extended stabilizers  
3D negative

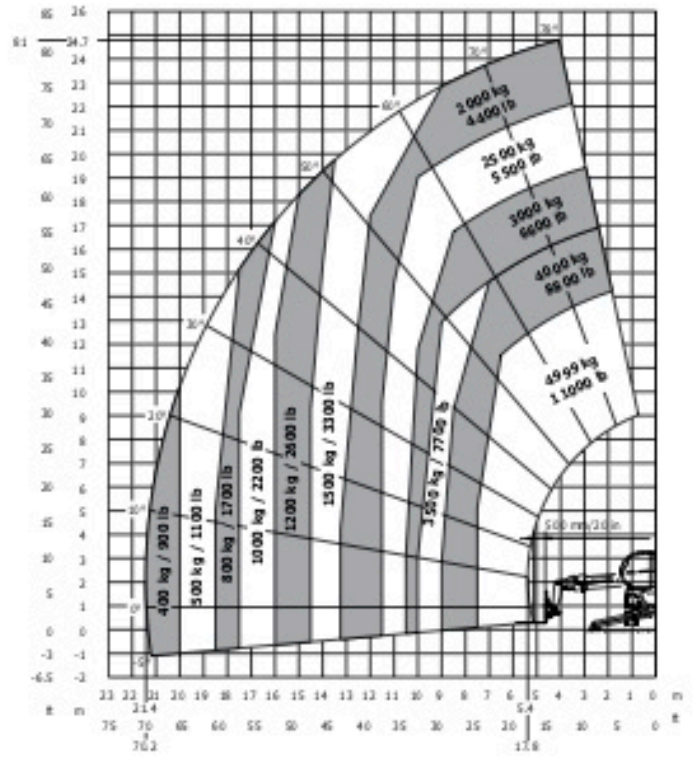




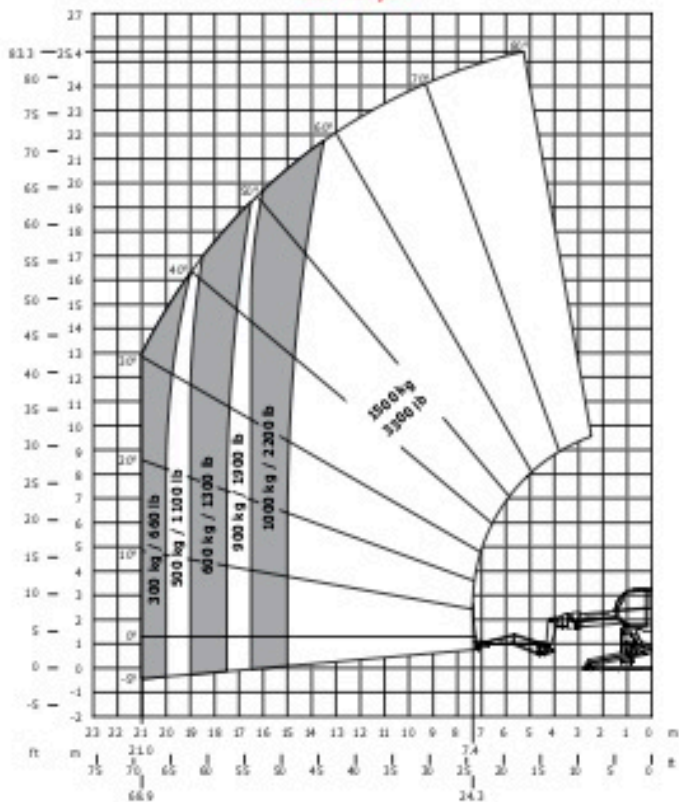
**Frontal wheels  
with forks**



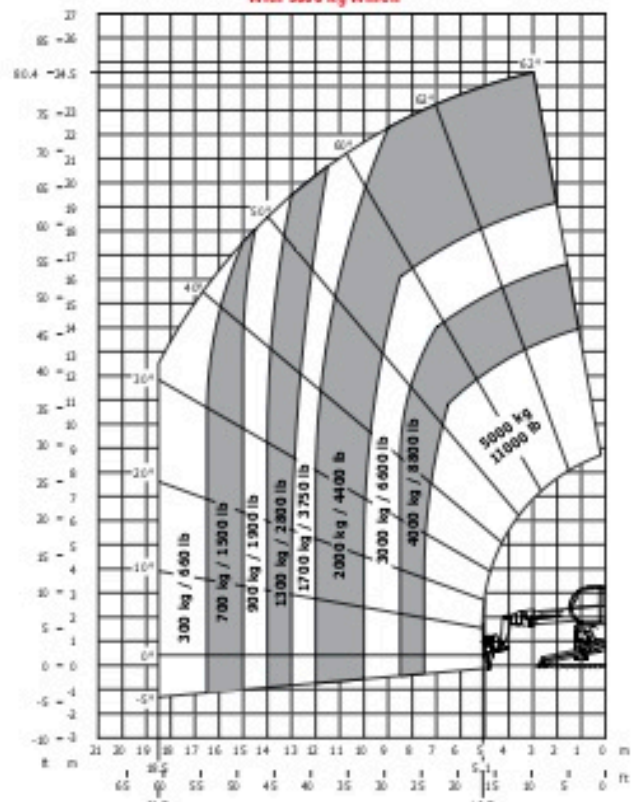
**Rotation on extended stabilizers  
with forks**



**Rotation on extended stabilizers  
with 1500 lb**



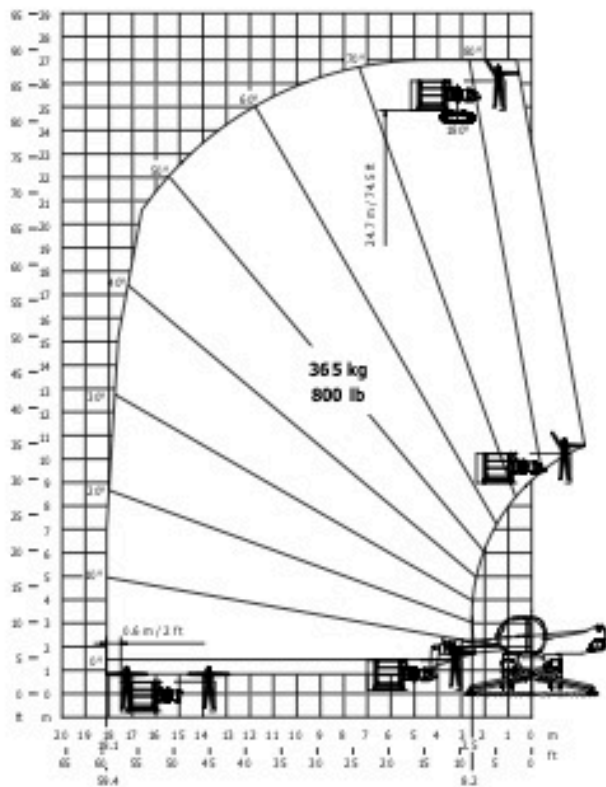
**Rotation on extended stabilizers  
with 5000 kg winch**



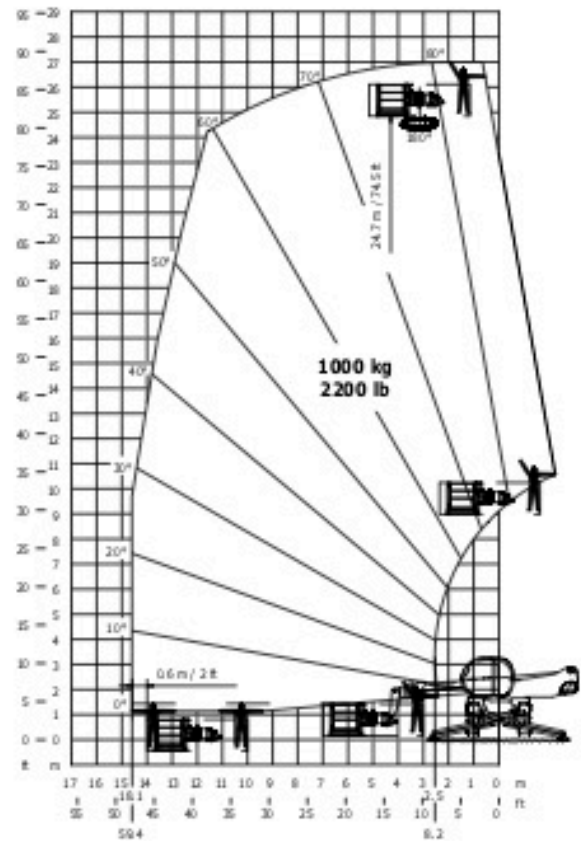
# MRT 2550 PRIVILEGE +



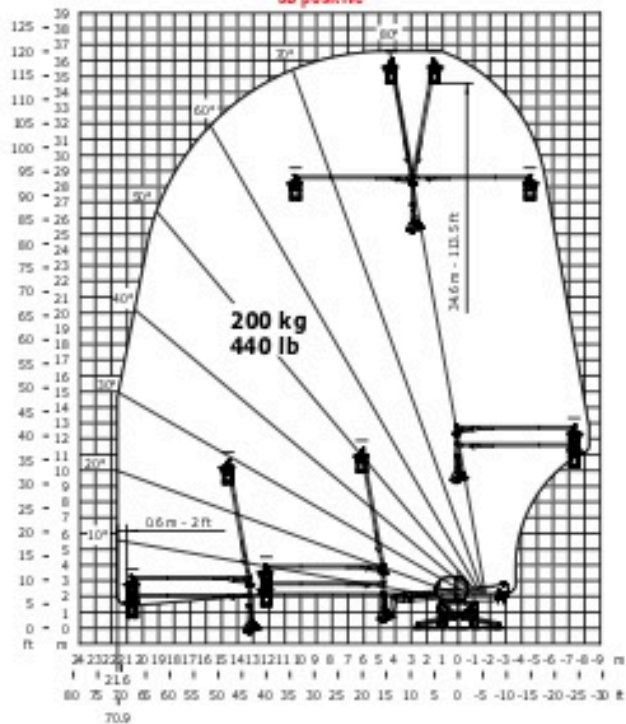
Rotation on extended stabilizers  
with 365 kg platform



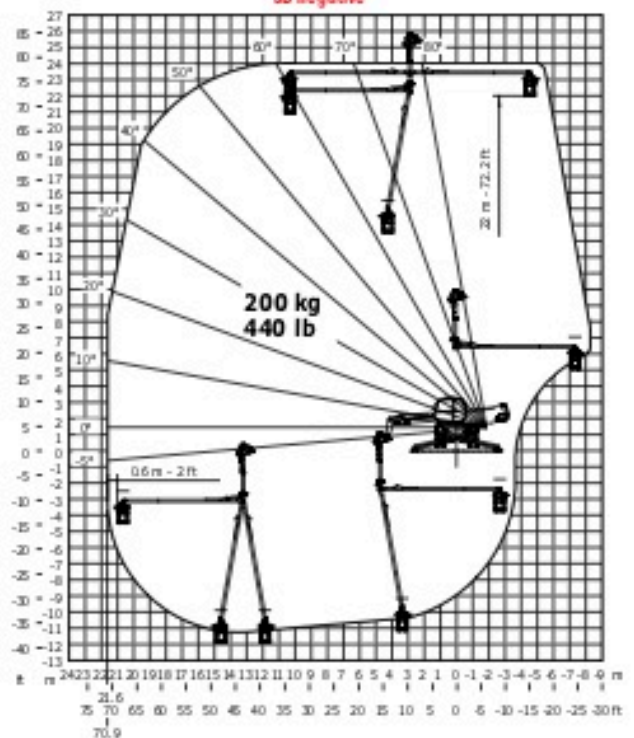
Rotation on extended stabilizers  
with 1000 kg platform



Rotation on extended stabilizers  
3D positive



Rotation on extended stabilizers  
3D negative



Your MANITOU dealer



Head office :  
B.P. 249 - 430 rue de l'Aubinière - 44158 Ancenis Cedex - France  
Phone.: +33 (0)2 40 09 10 11 - Fax: +33 (0)2 40 09 10 97  
[www.manitou.com](http://www.manitou.com)

