

LIEBHERR MK 88 & 140 MOBIILITORNINOSTURIT



SJÖMAN

+358 9 350 5600
www.sjoman.com

KETTERÄ MOBIILITORNINOSTURI TUO TEHOKKUUTTA JA NOPEUTTA TYÖSKENTELYYN.

Mobiilitorninosturissa yhdistyvät ajoneuvonosturin helppo liikuteltavuus ja torninosturin ulottuvuus. Nosturi on nostovalmiina alle tunnissa.

Lisäksi mobiilitorninostureissa on ympäristöystävällinen sähkökäyttömahdollisuus.



MK 88 ja **MK 140** sopivat käytännössä samoihin työmaakohteisiin, mutta **MK 140** mallissa on enemmän nostovoimaa ja ulottuvuutta. **MK 88** ulottuvuutta voidaan verrata 250-tonniseen ajoneuvonosturiin. **MK 140** puolestaan vertautuu ulottuvuudeltaan 350-tonnisiin ajoneuvonostureihin.

MK 88 nosturissa on 15, 30 ja 45 asteen kulmaan kääntyvä jibi. **MK 140** puomin jibi saadaan jopa 70 asteen kulmaan, jolloin koukkukorkeudeksi tulee 94,4m. Tätä ominaisuutta ei normaaleissa torninostureissa ole.

Esimerkkejä mobiilitorninosturin työmaakohteista

- Teline- ja sääsuoja asennukset
- Kevyet nostot rakennustyömailla
- Julkisivu ja ullakkokohteet
- Kattotyöt
- Aurinkopaneelien asennukset
- Elementtiasennukset

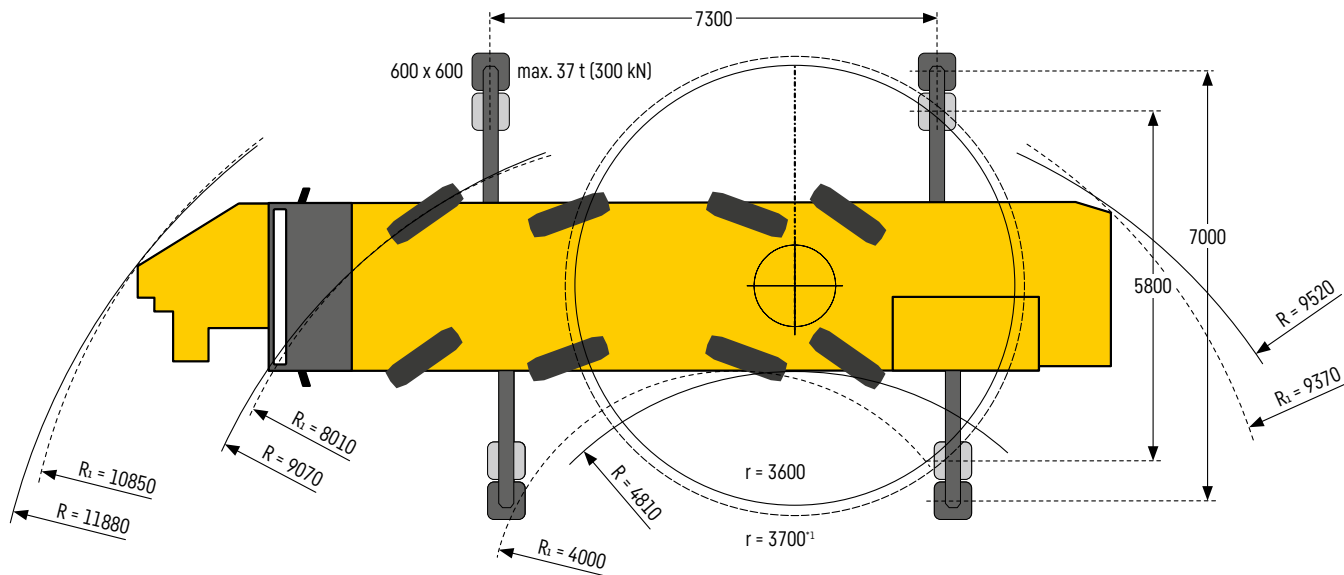
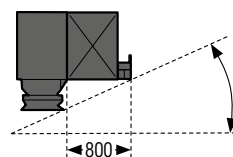
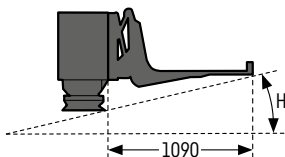
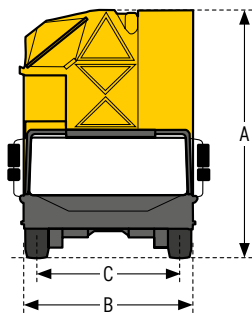
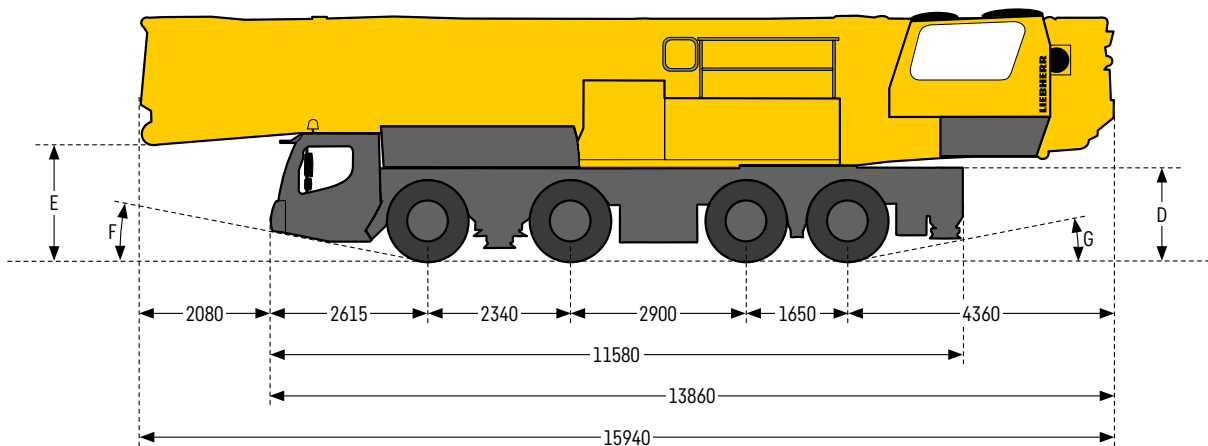



Up to 90 % CO₂ emissions reduction

HVO ready

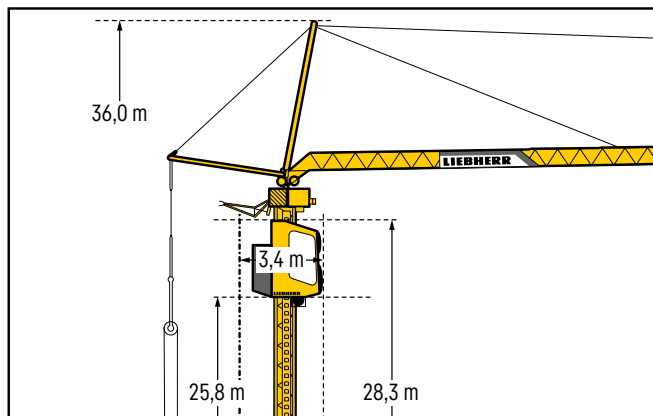
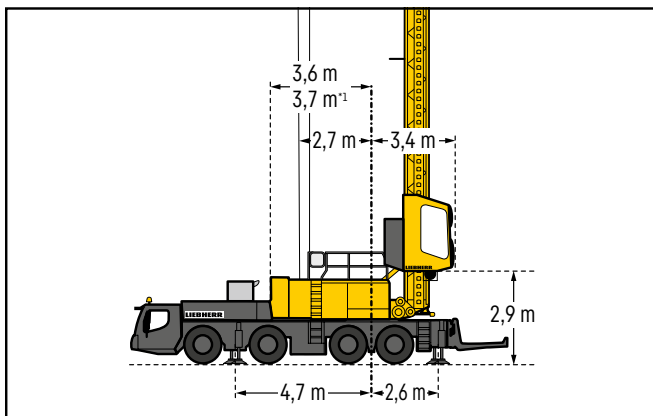
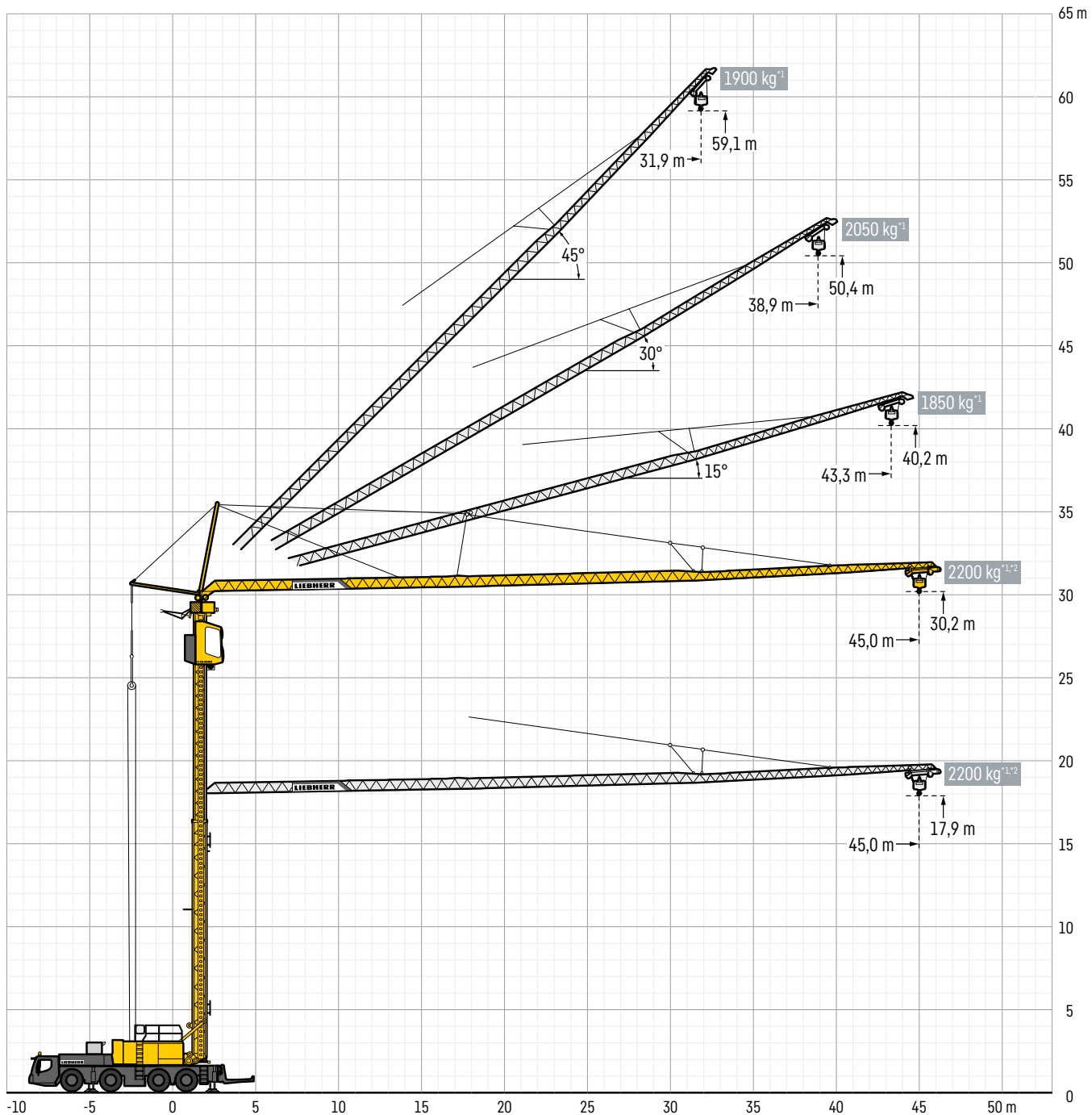
MK 88

Mitat

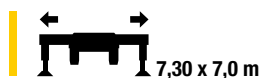
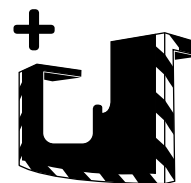


	A	A	B	C	D	E	F	G	H	I
385/95 R 25 (14.00 R 25)	4000	4000 100*	2750	2360	1522	1890	12,0°	12,0°	9,3°	12,0°

Tekniset mitat



**MK 88, *1 mit Zusatzballast/with additional ballast/avec lest additionnel/
con lastre adicional/met extra ballast/с дополнительным балластом**



				m																			
		m	kg	10,0	12,0	14,0	16,0	18,0	20,0	22,0	24,0	26,0	28,0	30,0	32,0	34,0	36,0	38,0	40,0	42,0	44,0	45,0	
0°	45,0		3,3 - 12,0	8000	8000	8000	6900	6070	5410	4870	4420	4050	3730	3450	3210	2990	2800	2630	2480	2340	2220	2100	2050
			3,3 - 11,0	8000	8000	7370	6360	5580	4960	4460	4050	3700	3400	3140	2920	2720	2540	2390	2250	2120	2000	1900	1850
	Plus*2		3,3 - 13,0	8000	8000	8000	7490	6600	5900	5320	4840	4440	4090	3790	3530	3300	3090	2920	2760	2600	2440	2280	2200
15°	43,3		3,2 - 40,0	1850	1850															1700*3			
			3,2 - 35,0	1850	1850													1400*3					
30°	38,9		3,0 - 11,0	6000	6000	5650	5050	4560	4150	3810	3510	3250	3030	2830	2650	2490	2350	2220	2050				
			3,0 - 9,0	6000	5620	4970	4450	4020	3660	3360	3100	2870	2670	2490	2340	2200	2070	1950	1800				
45°	31,9		2,7 - 31,9	1850	1850																		
			2,7 - 31,9	1850	1850																		

→ kg

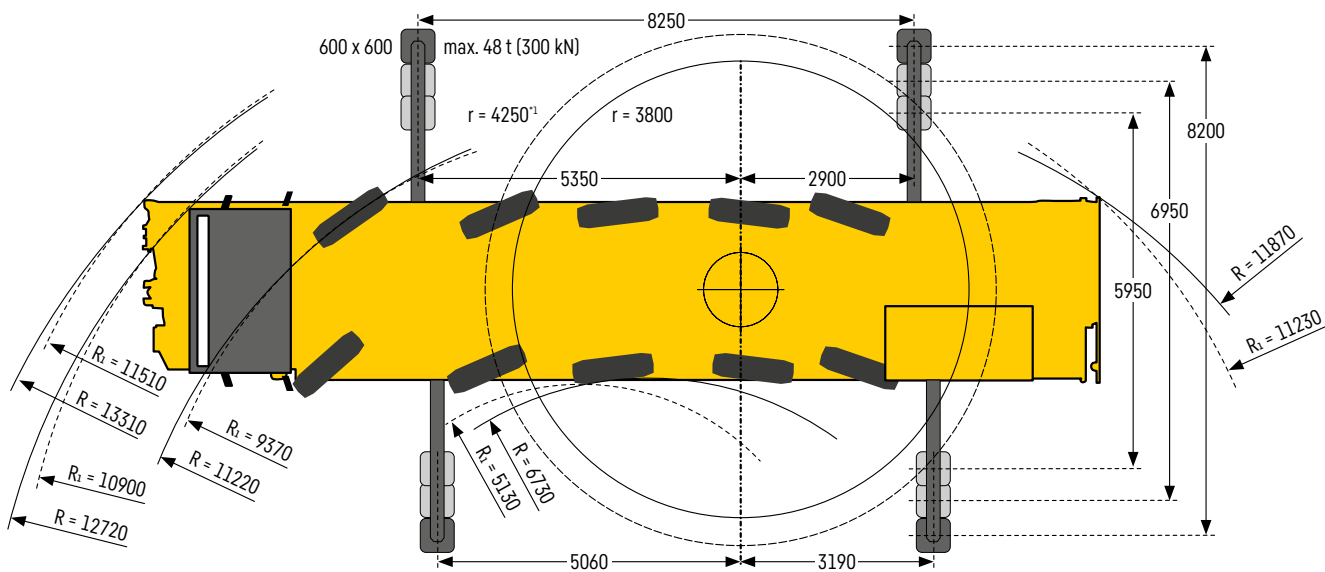
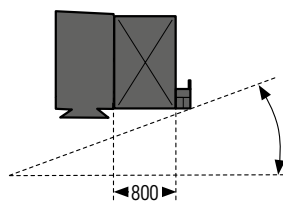
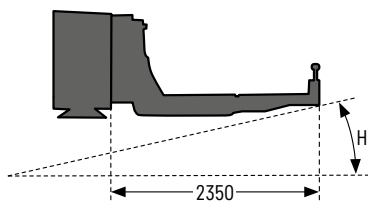
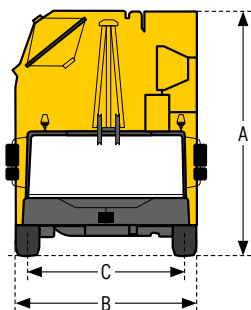
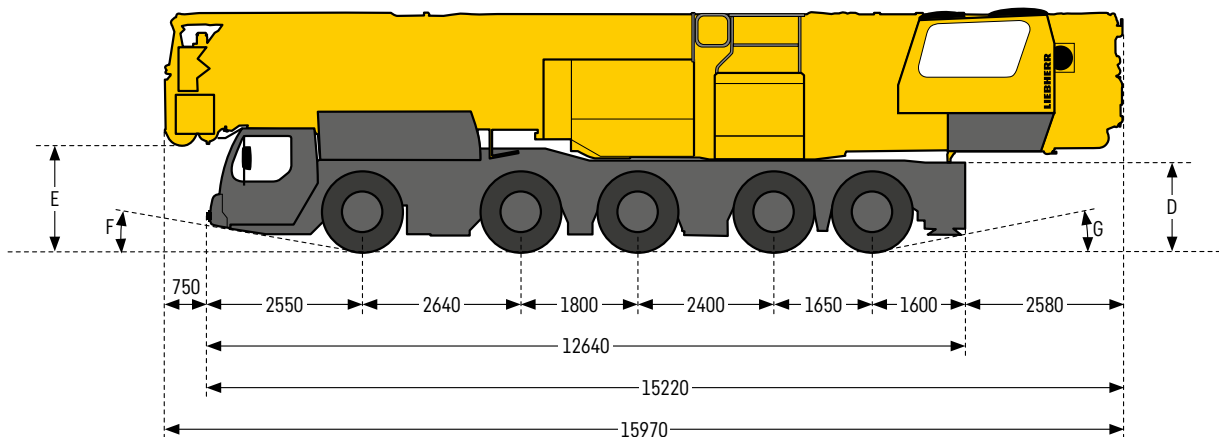



				m																			
		m	kg	10,0	12,0	14,0	16,0	18,0	20,0	22,0	24,0	26,0	28,0	30,0	32,0	34,0	36,0	38,0	40,0	42,0	44,0	45,0	
0°	45,0		3,3 - 10,5	8000	8000	6930	5870	5080	4470	3980	3580	3250	2970	2730	2520	2340	2180	2030	1910	1790	1690	1590	1550
			3,3 - 9,5	8000	7590	6310	5380	4680	4130	3690	3320	3020	2760	2540	2350	2180	2030	1900	1780	1680	1580	1490	1450
15°	43,3		3,2 - 34,0	1850	1850													1450*3					
			3,2 - 29,0	1850	1850											1150*3							
30°	38,9		3,0 - 11,0	6000	6000	5580	4880	4320	3880	3510	3200	2930	2700	2500	2330	2180	2040	1910	1750				
			3,0 - 9,0	6000	5480	4650	4030	3540	3150	2830	2570	2340	2150	1980	1830	1700	1590	1490	1350				
45°	31,9		2,7 - 31,9	1850	1850																		
			2,7 - 24,0	1850	1850							1350*3											

→ kg

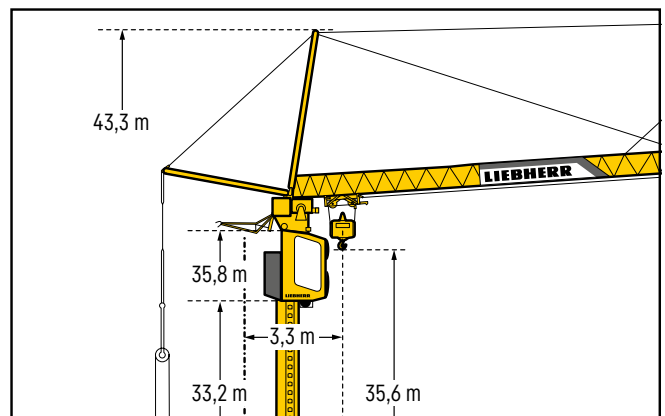
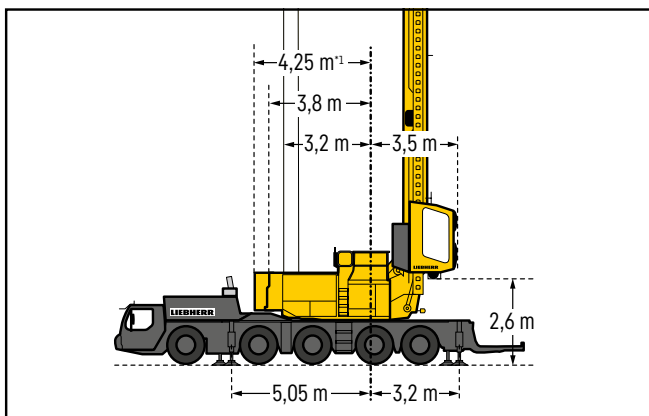
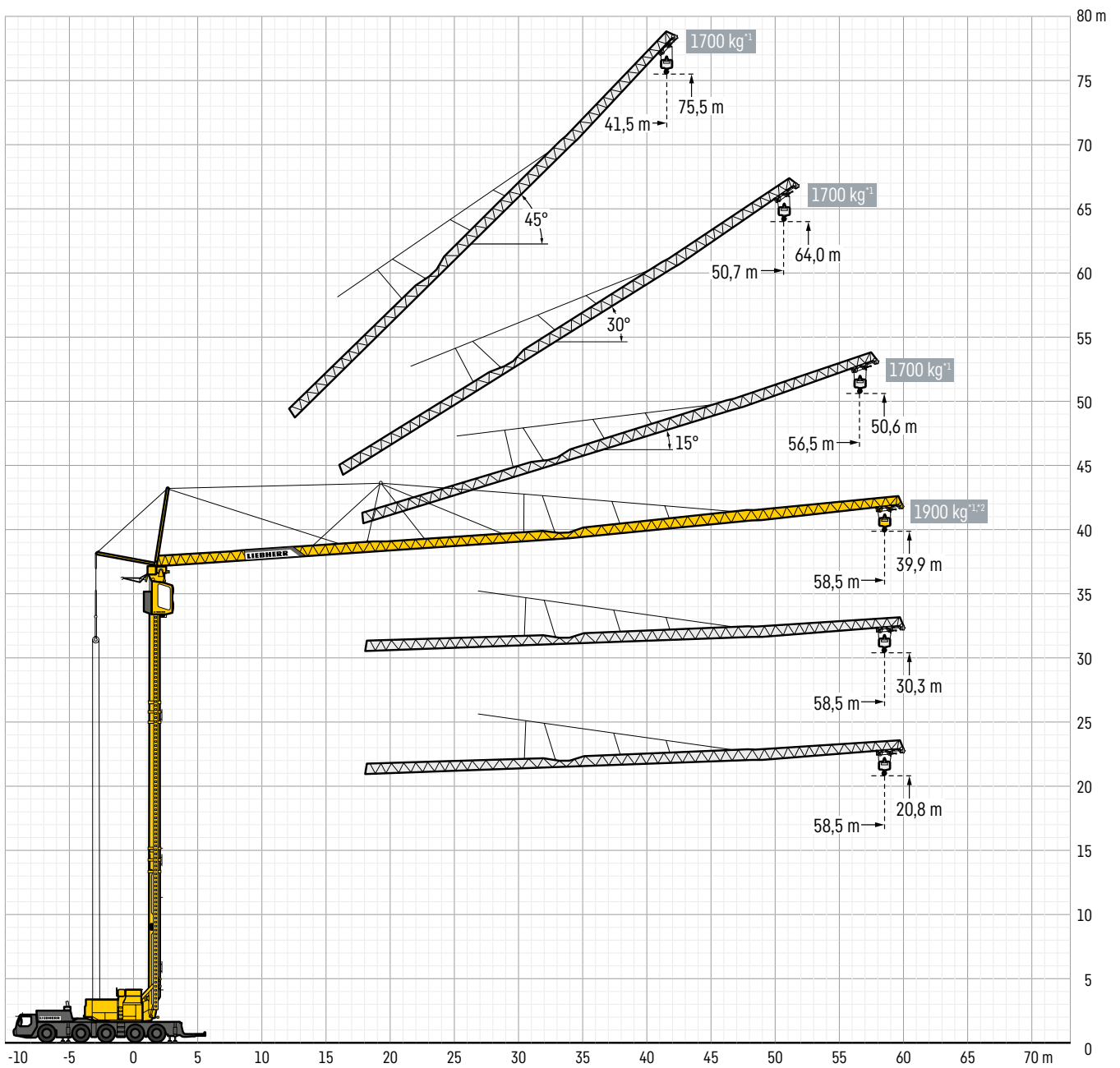
MK 140

Mitat

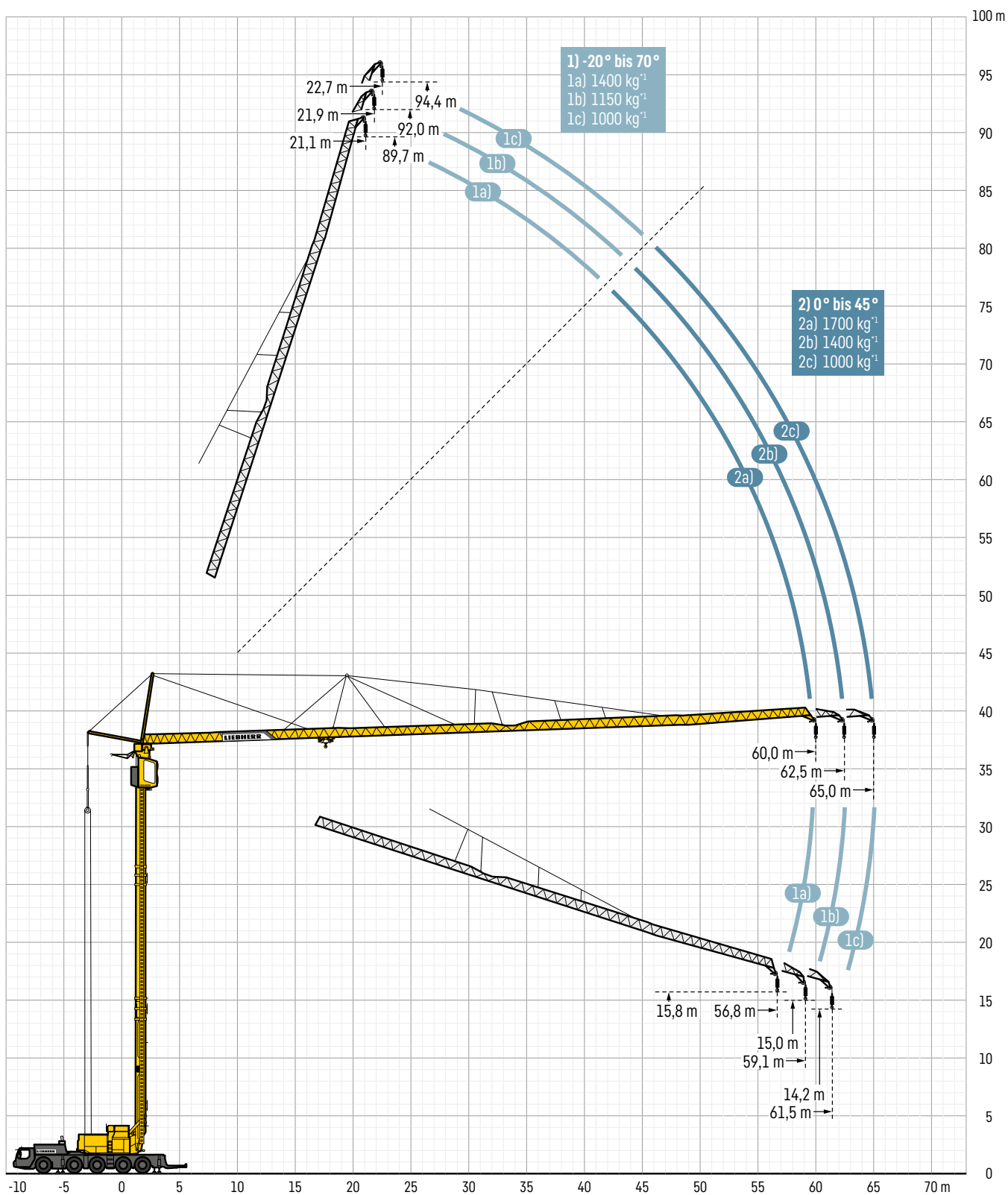


	A	A 100*	B	C	D	E	F	G	H	I
385/95 R 25 (14.00 R 25)	4000	4000	3000	2610	1370	1800	12,0°	13,0°	7,0°	12,0°

Variojib Torninosturikäyttö



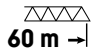
Vario jib Nosturikäyttö



Nosturikäyttö



8,20 m x 8,25 m



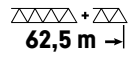
60 m →

		70° 21,1 m	45° 43,0 m	0° 60,0 m	-20° 56,8 m
+0t		550	800	550	
+3t		800	1150	800	
+6t		1150	1400	1150	
+9t		1400	1700	1400	

→ kg



8,20 m x 8,25 m



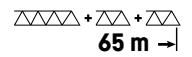
62,5 m →

		70° 21,9 m	45° 44,7 m	0° 62,5 m	-20° 59,1 m
+0t		300	650	300	
+3t		650	800	650	
+6t		800	1150	800	
+9t		1150	1400	1150	

→ kg



8,20 m x 8,25 m



65 m →

		70° 22,7 m	45° 46,5 m	0° 65,0 m	-20° 61,5 m
+0t				300	
+3t				550	
+6t				800	
+9t				1000	

→ kg

Nostoarvot ajopainoilla

10,3 t



8,20 m x 8,25 m

α°	m →	m	kg	m																			
				3,0	6,0	9,0	12,0	15,0	18,0	21,0	24,0	27,0	30,0	33,0	36,0	39,0	42,0	45,0	48,0	51,0	54,0	57,0	58,5
0°	58,5		3,3 - 13,4	8000	8000			7110	5880	4990	4320	3800	3380	3040	2760	2520	2310	2130	1970	1830	1710	1600	1550
			3,3 - 11,5	8000	8000		7660	6090	5030	4270	3700	3250	2890	2590	2350	2140	1960	1800	1660	1540	1440	1340	1300
	Plus ²		3,3 - 14,4	8000	8000			7670	6340	5390	4680	4120	3670	3300	3000	2740	2510	2320	2150	2000	1870	1750	1700
15°	56,5		3,2 - 50,0	1800	1800																		
			3,2 - 42,0	1800	1800														1650	1530	1420	1320	1250
	Plus		3,2 - 37,8	2500	2500											2410	2210	2040	1890	1760	1640	1550	
			3,2 - 25,5	2500	2500						2340	2060	1840	1650	1490	1350	1240	1130	1040	960	900		
30°	50,7		3,0 - 16,0	6000	6000			5280	4460	3840	3370	2990	2680	2420	2200	2010	1850	1710	1600				
			3,0 - 14,0	6000	6000		5550	4510	3790	3250	2830	2500	2230	2000	1820	1650	1510	1390	1300				
45°	41,5		2,7 - 39,7	1800	1800														1700				
			2,7 - 36,0	1800	1800											1620	1500						
	Plus		2,7 - 28,5	2650	2650						2500	2240	2020	1840	1700								
			2,7 - 26,1	2650	2650				2550	2250	2000	1800	1630	1500									

→ kg



6,95 m x 8,25 m

α°	m →	m	kg	m																					
				3,0	6,0	9,0	12,0	15,0	18,0	21,0	24,0	27,0	30,0	33,0	36,0	39,0	42,0	45,0	48,0	51,0	54,0	57,0	58,5		
0°	58,5		3,3 - 10,5	8000	8000			6890	5380	4390	3690	3160	2760	2440	2180	1960	1780	1620	1480	1360	1260	1170	1080	1050	
			3,3 - 8,4	8000	8000	7360	5360	4170	3390	2840	2430	2110	1850	1650	1470	1330	1200	1090	1000	920	840	780	750		
15°	56,5		3,2 - 36,5	1800	1800														1650	1500	1370	1250	1150	1060	1000
			3,2 - 28,5	1800	1800											1680	1490	1330	1200	1080	980	890	820	750	700
	Plus		3,2 - 28,0	2500	2500						2300	2040	1830	1650	1500	1370	1260	1160	1070	1000					
			3,2 - 21,8	2500	2500				2230	1930	1690	1500	1340	1200	1090	990	900	820	750	700					
30°	50,7		3,0 - 12,5	6000	6000			4870	3950	3300	2820	2450	2160	1920	1720	1560	1410	1290	1180	1100					
			3,0 - 9,5	6000	6000		4550	3490	2810	2330	1970	1700	1480	1300	1160	1030	930	840	760	700					
45°	41,5		2,7 - 33,5	1800	1800														1630	1470	1350				
			2,7 - 26,5	1800	1800											1750	1520	1330	1170	1040	950				
	Plus		2,7 - 24,8	2650	2650						2380	2080	1840	1640	1470	1350									
			2,7 - 19,8	2650	2650				2450	2060	1750	1520	1330	1180	1050	950									

→ kg



5,95 m x 8,25 m

α°	m →	m	kg	m																							
				3,0	6,0	9,0	12,0	15,0	18,0	21,0	24,0	27,0	30,0	33,0	36,0	39,0	42,0	45,0	48,0	51,0	54,0	57,0	58,5				
0°	58,5		3,3 - 7,1	8000	8000	6110	4400	3410	2750	2290	1940	1680	1470	1290	1150	1030	920	830	760	690	630	570	550				
			3,3 - 4,8	8000	8000	6340	4110	2990	2320	1860	1540	1300	1110	960	840	730	650	570	510	450	400	350	310	300			
15°	56,5		3,2 - 23,5	1800	1800											1750	1500	1310	1150	1020	910	810	730	660	590	540	500
			-	-															-								
	Plus		3,2 - 18,0	2500	2500						2070	1750	1510	1310	1160	1020	910	820	730	660	600	540	500				
			-	-															-								
30°	50,7		3,0 - 8,3	6000	6000	5440	3930	3040	2450	2040	1730	1490	1300	1140	1010	900	800	720	650	600							
			-	-															-								
45°	41,5		2,7 - 23,5	1800	1800											1750	1490	1290	1130	990	880	800					
			2,7 - 16,0	1800	1800						1530	1240	1020	850	720	610	520	450	400								
	Plus		2,7 - 17,5	2650	2650				2560	2090	1750	1500	1300	1130	1000	880	800										
			2,7 - 11,9	2650	2650			1960	1530	1240	1020	860	720	620	530	460	400										

→ kg

Nostoarvot lisäpainoilla

13,3 t



8,20 m x 8,25 m

α°	m →	m	kg	m																		
				3,0	6,0	9,0	12,0	15,0	18,0	21,0	24,0	27,0	30,0	33,0	36,0	39,0	42,0	45,0	48,0	51,0	54,0	57,0
0°	58,5	3,3 - 13,4	8000	8000			7290	6220	5400	4750	4230	3790	3420	3110	2830	2600	2390	2200	2040	1890	1760	1700
		3,3 - 12,0	8000	8000			6630	5630	4870	4270	3780	3380	3050	2760	2520	2310	2120	1950	1800	1670	1550	1500
	Plus ²	3,3 - 14,4	8000	8000			7706	6504	5613	4925	4379	3934	3565	3254	2988	2758	2558	2381	2224	2084	1958	1900
15°	56,5	3,2 - 54,0	1800	1800																		
		3,2 - 50,0	1800	1800																		
	Plus	3,2 - 41,3	2500	2500												2450	2250	2080	1930	1800	1700	
		3,2 - 37,8	2500	2500												2410	2210	2040	1890	1760	1640	1550
30°	50,7	3,0 - 16,0	6000	6000			5320	4540	3940	3480	3100	2790	2530	2310	2120	1960	1810	1700				
		3,0 - 14,0	6000	6000	5610	4680	4000	3490	3080	2740	2470	2240	2040	1880	1730	1600	1500					
45°	41,5	2,7 - 39,7	1800	1800																		
		2,7 - 36,0	1800	1800																		
	Plus	2,7 - 28,5	2650	2650												2500	2240	2020	1840	1700		
		2,7 - 26,1	2650	2650												2550	2250	2000	1800	1630	1500	

→ kg



6,95 m x 8,25 m

α°	m →	m	kg	m																			
				3,0	6,0	9,0	12,0	15,0	18,0	21,0	24,0	27,0	30,0	33,0	36,0	39,0	42,0	45,0	48,0	51,0	54,0	57,0	58,5
0°	58,5	3,3 - 12,7	8000	8000			6650	5430	4570	3930	3440	3050	2730	2460	2240	2040	1880	1730	1610	1490	1390	1350	
		3,3 - 10,5	8000	8000	6930	5440	4460	3760	3230	2830	2510	2240	2020	1840	1680	1540	1420	1310	1220	1130	1100		
15°	56,5	3,2 - 44,0	1800	1800																			
		3,2 - 36,5	1800	1800																			
	Plus	3,2 - 33,7	2500	2500												2310	2090	1910	1750	1610	1490	1380	1300
		3,2 - 28,0	2500	2500												2300	2040	1830	1650	1500	1370	1260	1160
30°	50,7	3,0 - 15,0	6000	6000			4860	4070	3490	3040	2680	2390	2150	1950	1780	1630	1500	1400					
		3,0 - 12,0	6000	6000	4660	3780	3160	2700	2350	2070	1840	1650	1490	1350	1230	1130	1050						
45°	41,5	2,7 - 39,7	1800	1800																			
		2,7 - 33,5	1800	1800																			
	Plus	2,7 - 28,5	2650	2650												2500	2240	2020	1840	1700			
		2,7 - 24,8	2650	2650												2380	2080	1840	1640	1470	1350		

→ kg



5,95 m x 8,25 m

α°	m →	m	kg	m																							
				3,0	6,0	9,0	12,0	15,0	18,0	21,0	24,0	27,0	30,0	33,0	36,0	39,0	42,0	45,0	48,0	51,0	54,0	57,0	58,5				
0°	58,5	3,3 - 9,1	8000	8000			5890	4590	3730	3130	2680	2330	2050	1830	1640	1480	1340	1220	1120	1030	950	880	850				
		3,3 - 6,8	8000	8000	5960	4390	3440	2800	2350	2010	1740	1530	1360	1210	1090	980	890	810	740	680	620	600					
15°	56,5	3,2 - 31,0	1800	1800																							
		3,2 - 23,5	1800	1800																							
	Plus	3,2 - 23,6	2500	2500												2450	2130	1870	1670	1490	1340	1220	1110	1010	930	860	800
		3,2 - 18,0	2500	2500												2070	1750	1510	1310	1160	1020	910	820	730	660	600	540
30°	50,7	3,0 - 10,5	6000	6000			5180	4040	3290	2760	2360	2050	1800	1600	1430	1290	1170	1060	970	900							
		3,0 - 7,8	6000	6000	5080	3680	2850	2300	1910	1610	1390	1210	1060	940	830	740	670	600	550								
45°	41,5	2,7 - 30,5	1800	1800																							
		2,7 - 23,5	1800	1800																							
	Plus	2,7 - 22,2	2650	2650												2410	2090	1840	1630	1460	1310	1200					
		2,7 - 17,5	2650	2650												2560	2090	1750	1500	1300	1130	1000	880	800			

→ kg